



FORMATION EVALUATION LOG



WELL : BASKER-3

FROM (m): 3000 TO (m): 4130 SCALE: 1/ 500

Country : AUSTRALIA	Latitude : 38°17'58.97"S	HOLE / CASING INFO 17 1/2" Hole to (mMDRT) : 1112m	Spud Date : 01-03-2006
Basin : GIPPSLAND	Longitude : 148°42'24.94"E	12 1/4" Hole to (mMDRT) : 3530m	Total Depth Date : 27-04-2006
Field : BASKER	UTM Co-ord X (m E) : 649256.8	13 3/8" Shoe at (mMDRT) : 1102.3m	Total Depth (mRT) : 4125m
Permit : VIC/L26	UTM Co-ord Y (m N) : 5759552.0	9 5/8" Shoe at (mMDRT) : 3520m	T.V.D. (mSS MSL) : 3331.8m
Well Type : DEVELOPMENT	RT-LAT (m) : 21.5		Status : COMPLETED
Rig Name : OCEAN PATRIOT	RT-Seabed (m) : 174.4		

ABBREVIATIONS

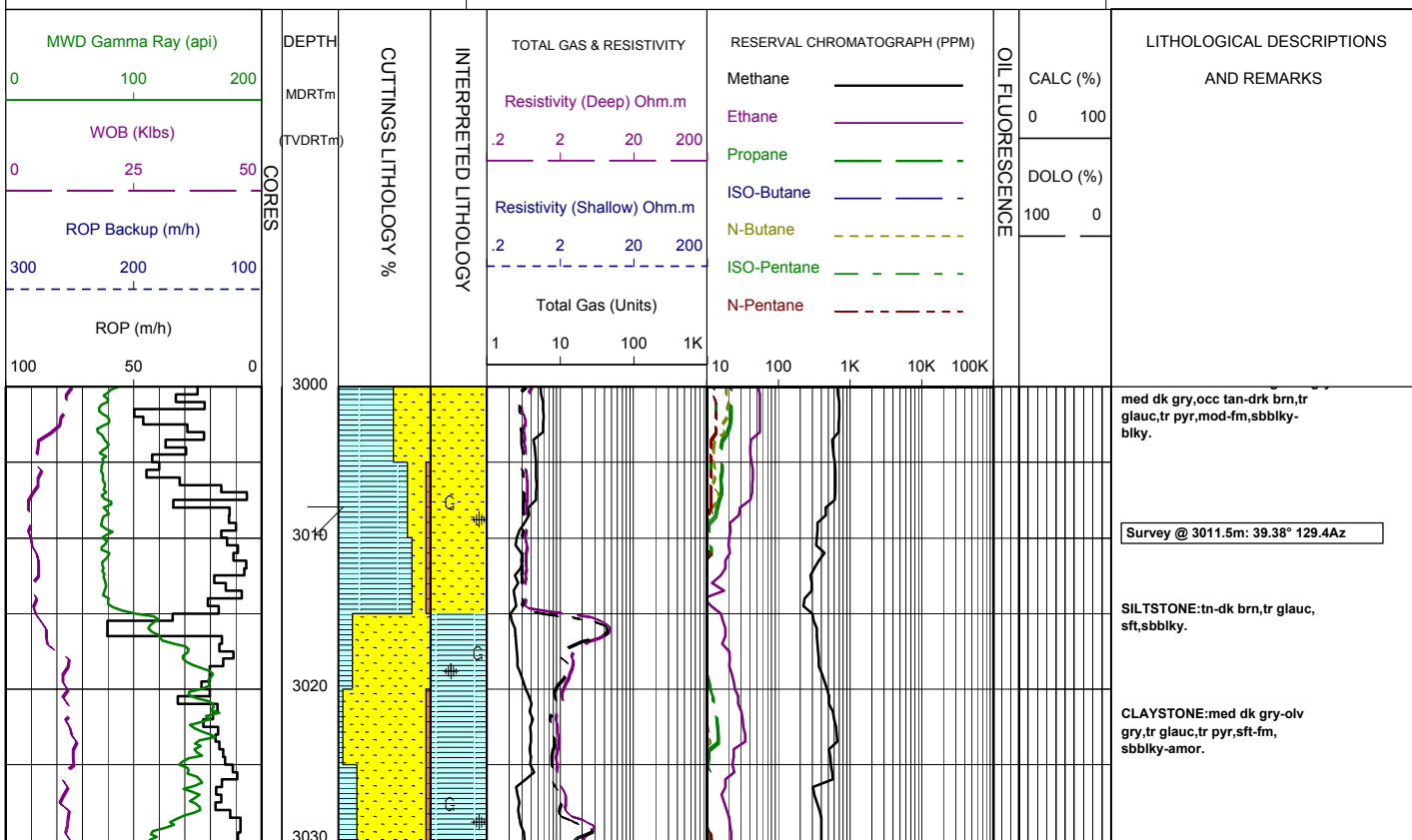
MW MUD WEIGHT	NB NEW BIT
FV FUNNEL VISCOSITY	RR RERUN BIT
PV PLASTIC VISCOSITY	CB CORE BIT
YP YIELD POINT	WOB WEIGHT ON BIT
FC FILTER CAKE	RPM REVS PER MINUTE
SOL SOLIDS	FLC FLOW CHECK
WL FILTRATE	CR CIRCULATE RETURNS
SD SAND - %	PR POOR RETURNS
S SALINITY - PPM	NR NO RETURNS
RM MUD RESISTIVITY	BG BACKGROUND GAS
RMF MUD FILTRATE	TG TRIP GAS
C CARBIDE TEST	STG SHORT TRIP GAS
LAT LOGGED AFTER TRIP	CG CONNECTION GAS
DS DEVIATION SURVEY	SG SWAB GAS
	SVG SURVEY GAS

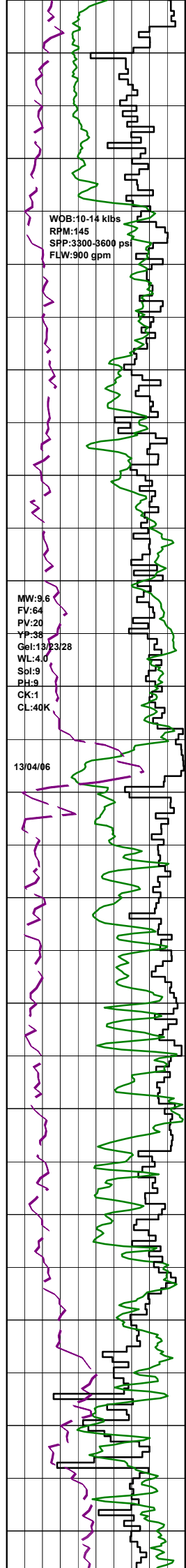
LITHOLOGY LEGEND

	Claystone		Limestone		Brachiopoda
	Siltstone		Dolomite		Cement
	ar. Silt ar		Coal		Sponges
	Fine SST		Gypsum		Glauconite
	Medium SST		Lithic Fragment		Pyrite
	Coarse SST		Foraminifera		Iron Minerals
	Marl		Fossils		Mica
	Clay, Limestone		Bryozoa		Carb Fragments

ENGINEERING LEGEND

	Shoe		FIT
	Mud loss		Mud gain
	Deviation survey		
	DST		
	Test		
	Sidewall Core		
	Core		
	RFT		

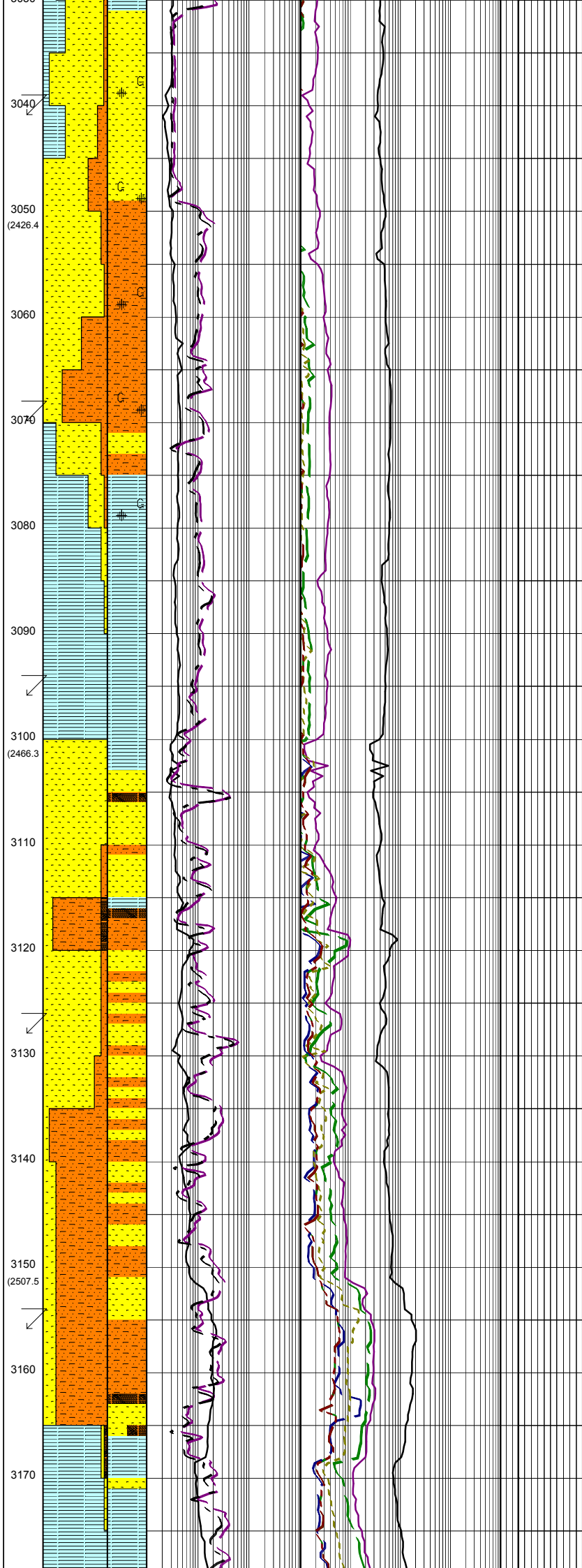




WOB:10-14 klbs
RPM:145
SFP:3300-3600 psi
FLW:900 gpm

MW:9.6
FV:64
PV:20
YP:38
Gel:13/23/28
WL:4.0
Spl:9
PH:9
CK:1
CL:40K

13/04/06



Survey @ 3041.1m: 38.31° 129.4Az

SILTSTONE:dk-olv gry,tan
lt brn-brn gry,sil i/p,clay i/p, tr
glauc,try pyr,tr carb spk,tr micmic,
occ f sd gm,sft-fr,sbbiky-blky.

SANDSTONE:wh-trnsi-clr,
vf-med,occ crs,mod wrt slr,sbang-
sbrnd,tr pyr,tr glauc,lse,fr inf
por,no fluor.

Survey @ 3069.8m: 37.19° 129.8Az

ARGILLACEOUS SILTSTONE:med-dk
gry,tr glauc,sft-fr,sbbiky-amor.

SILTSTONE:mott wh-dk brn,
tr glauc,tr pyr,fr,sbbiky-blky.

CLAYSTONE:med-med dk gry,dk
grn gry,glauc,sity i/p, tr carb spk,
vsft,occ fm,amor,occ sbbiky.

Survey @ 3099.1m: 35.76° 130.7Az

CLAYSTONE:med-med dk gry,dk
grn gry,glauc,sity i/p, tr carb spk,
tr pyr,occ f sd,vsft,occ fm,amor
occ sbbiky.

SANDSTONE:clr,trnsi,wh,pl grn,
dk gry,vf-med grn,rr crs,sbang-
sbrnd,mod srt,tr pyr cmt w/ glauc, tr
carb spk,sity i/p,lse,gd inf por,
no fluor.

COAL:blk,brn blk,dll-ea,brit,
tr fm,sbbiky,ang-uneven.

SANDSTONE:clr,trnsi,wh,pl grn,
dk gry,vf-med grn,com crs,sbang-
sbrnd,mod srt,tr pyr cmt w/ glauc, tr
carb spk,sity i/p,lse,gd inf por,
no fluor.

Survey @ 3127.2m: 34.78° 130.2Az

SILTSTONE:med dk gry-dk gry,
dk grn gry,com glauc,sity i/p,com
grd to ARGILLACEOUS SILTSTONE,
tr pyr,sft-fr,occ amor,sbbiky.

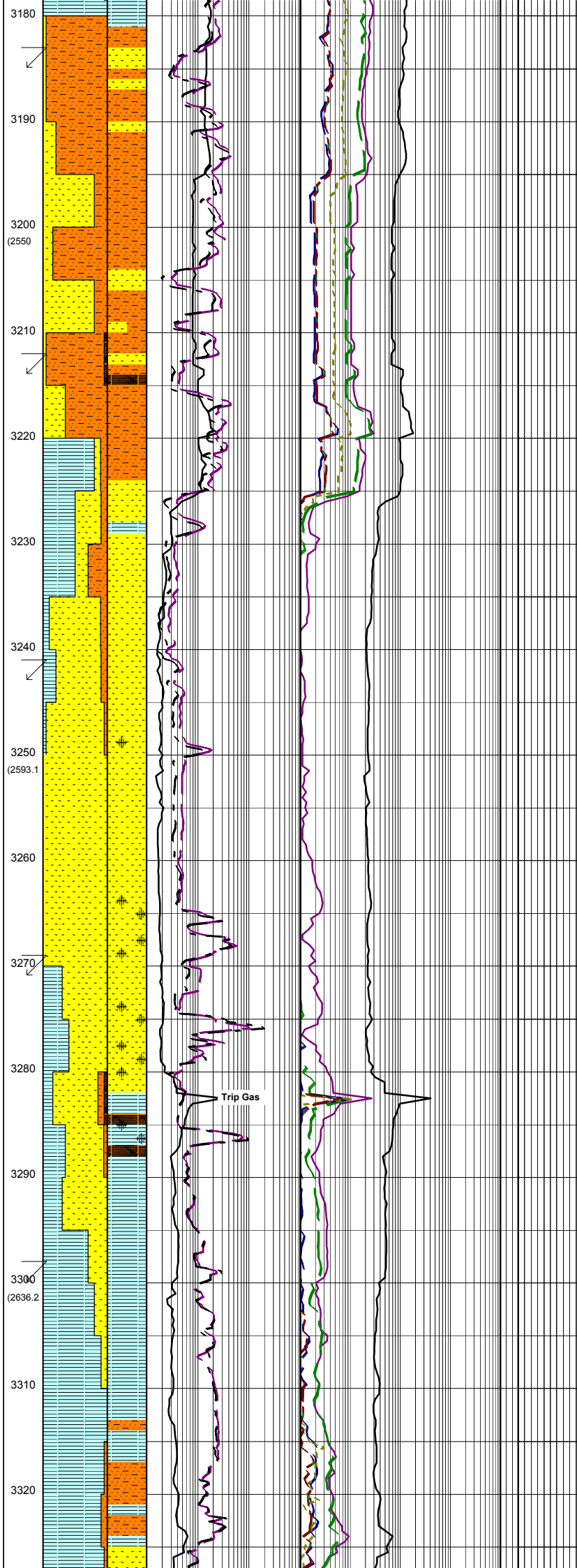
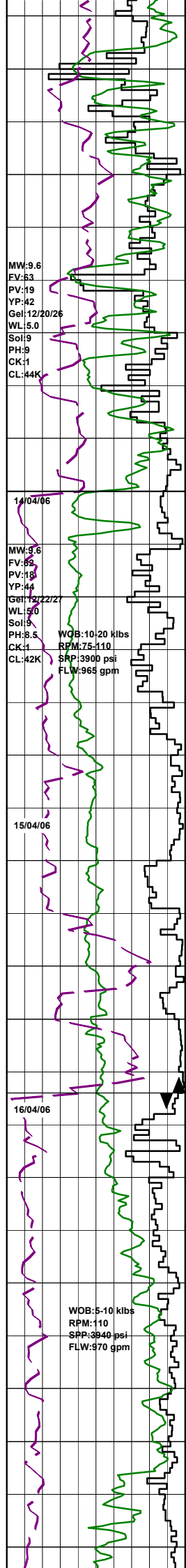
SANDSTONE:clr,trnsi,wh,pl grn,
dk gry,vf-med grn,com crs,sbang-
sbrnd,mod srt,tr pyr cmt w/ glauc, tr
carb spk,sity i/p,lse,gd inf por,
no fluor.

SILTSTONE:dk gry,lt olv gry,yelsh
brn,com glauc,clay i/p, tr C frag,com
grd to ARGILLACEOUS SILTSTONE,
tr pyr,sft-fr,occ amor,sbbiky.

Survey @ 3156.2m: 32.89° 130.5Az

CLAYSTONE:dk gry,lt olv gry,dk
grn gry, tr glauc,sity i/p, tr vf qtz grn,
com grd to SILTY CLAYSTONE, tr
pyr,sft,occ amor,sbbiky.

SILTY CLAYSTONE:lt-dk gry,
brnsh gry,mott wh, tr glauc, tr C,
vsft-sft,sbbiky-amor.



Survey @ 3185.3m: 31.01° 130.8Az

ARGILLACEOUS SILTSTONE: brnsh blk, med dk-dk gry, olv gry, tr glauc, vsft- fm, sbbiky-blky.

SANDSTONE: wh, clr-trnsl, f-crs, pr-mod srt, sbang-sbrnd, kaol mtx, sft, pr-fr inf por, no fluor.

SANDSTONE: trnsl-clr, vf-crs, mod srt, sbang-sbrnd, kaol mtx, tr pyr, sft, pr vis por, pr-fr inf por no fluor.

Survey @ 3214.2m: 30.14° 132.7Az

COAL: blk-brn blk, dll-ea, stly brit-fr, sbfiss-sbbiky, unevn-ang i/p.

ARGILLACEOUS SILTSTONE: med-dk gry, olv gry, brn gry occ tan, tr carb spk, sft-fm, sbbiky-amor.

POOH @ 3225m TO 2600m TO REPAIR THE TOP DRIVE

CLAYSTONE: med-med dk gry, dk grnsh gry, tr pyr, tr glauc, frm, sbbiky-blky.

SANDSTONE: clr-trnsl, occ orng, med-crs, mod srt, ang-sbang, lse, pr inf por, no fluor.

Survey @ 3242.1m: 30.76° 135.8Az

SILTSTONE: dk brn-brnsh gry, sft-fm, sbbiky-blky.

SANDSTONE: clr-trnsl, wh, dk gry, med-vcrs, pred crs, mod srt, sbang-ang, pyr cmt, tr glauc, tr sil cmt, lse, tr fr-gd inf por, no fluor.

SANDSTONE: clr-trnsl, wh, dk gry, dom crs grn, rr med, mod srt, ang-sbang, com pyr, tr glauc, tr sil cmt, lse, gd inf por, no fluor.

Survey @ 3271.1m: 30.42° 135.6Az

CLAYSTONE: olv gry, dk gry, grnsh gry, tr calc, tr glauc, stly i/p, tr carb spk, frm-hd, rr vhd, sbbiky-blky, tr splty.

COAL: blk-brn blk, dll-ea, stly brit-fr, sbfiss-sbbiky, unevn-ang i/p.

BIT #6: Hycalog RSX616M-A9
SIZE: 311mm 12.25"
JETS: 4x18, 2x20
IN: 3282m OUT: 3530m
RUN: 248m HRS: 26.4
COND: 0-2-WT-S-X-IN-PN-TD

SANDSTONE: clr-trnsl, occ grn, f-med, wl srt, sbang-sbrnd, tr glauc, tr pyr, tr mic foss, lse, fr inf por, no fluor.

Survey @ 3299.9m: 29.99° 135.23Az

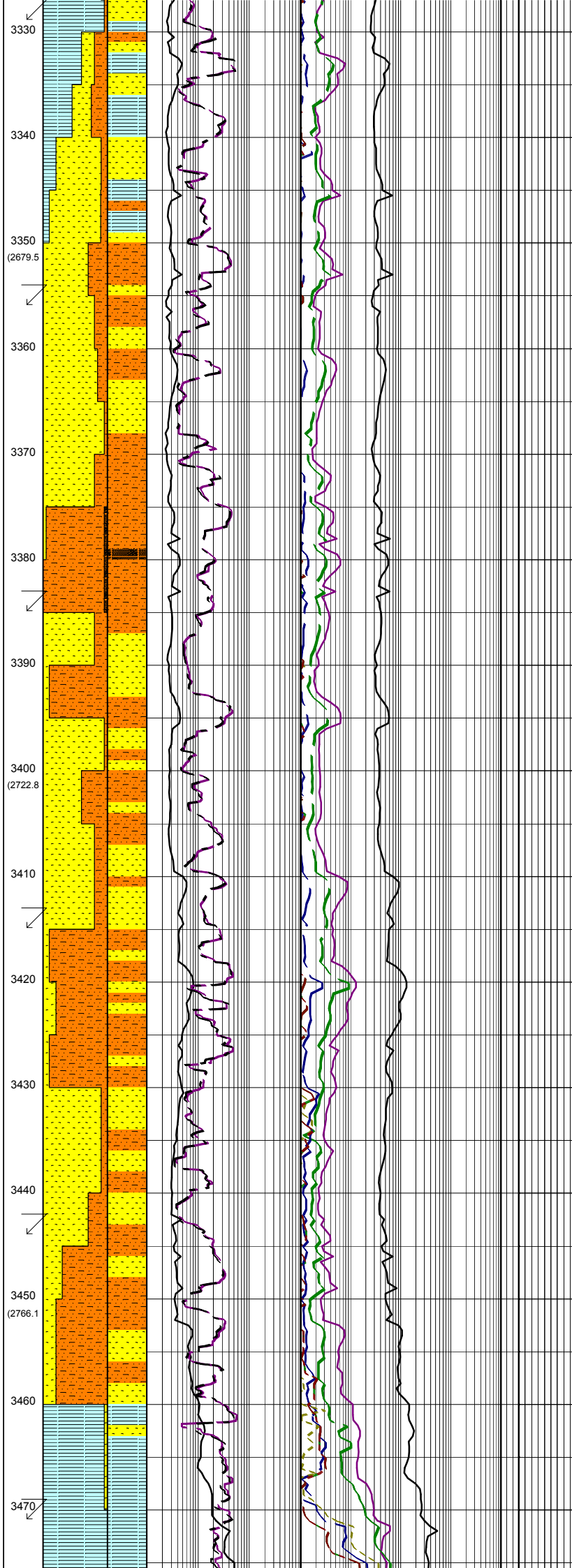
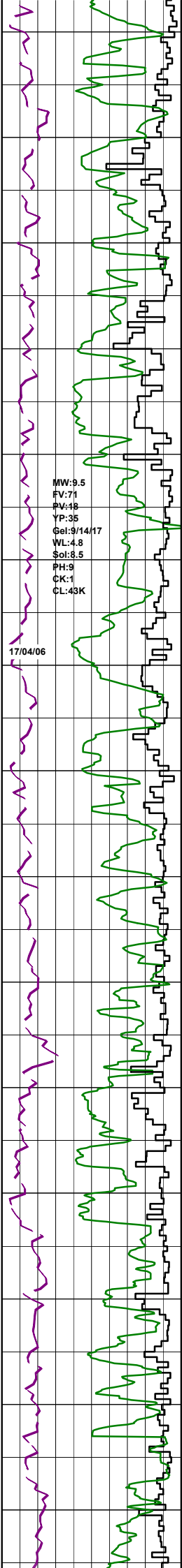
CLAYSTONE: med dk-dk gry, calc, tr glauc, tr carb spk, stly i/p, sft-fm, sbbiky-blky.

SILTY CLAYSTONE: lt-med dk gry, drk gry, calc, tr glauc, tr carb spk, vsft-fm, sbbiky-amor.

SILTSTONE: brn-dk brn, tr glauc, tr sand, sft, sbbiky.

SILTY CLAYSTONE: med-med dk gry, mott lt gry, calc, tr glauc, tr micmic, vsft-fm, sbbiky-amor.

Trip Gas



Survey @ 3328.7m: 29.86° 137.4Az

CLAYSTONE:lt gry-dk gry,tr pry,tr micmic,tr glauc,tr carb spk, vsft-fm,calc.sbbiky-amor.

SANDSTONE:trnsi-clr,f-med occ crs,wl sr, sbang-sbrnd,lse, fr inf por,no fluor.

SILTSTONE:brn-dk brn,occ tan tr coal,tr pyr,sft-fm,sbfiss-sbbiky.

Survey @ 3356.8m: 30.16° 137.4Az

ARGILLACEOUS SILTSTONE:med-dk gry,brn-brnsh blk,ty pyr,tr glauc, vsft-fm,sbbiky-blky.

SANDSTONE:trnsi-clr,f-crs, occ vcrs,sbang-sbrnd,mod srt, sft,tr carb spk,pr-fr vis por,pr-fr inf por,no fluor.

ARGILLACEOUS SILTSTONE:it-med gry,brn-brnsh blk,ty pyr,tr glauc, vsft-fm,sbbiky-amor.

COAL:blk,brn blk,dll-ea,brit, tr fm,sbbiky,ang-uneven.

Survey @ 3385.4m: 29.85° 137.9Az

SANDSTONE:trnsi-clr,wh,yel,f-crs, occ vcrs,sbang-sbrnd,mod srt, sft,tr carb spk,gd inf por,no fluor.

ARGILLACEOUS SILTSTONE:it-med gry,grn gry,brnsh blk,ty pyr,tr glauc, tr carb spk,vsft-fm,sbbiky-amor.

SANDSTONE:trnsi-clr,wh,yel,f-crs, occ vcrs,sbang-sbrnd,sft,mod srt, tr carb spk,gd inf por,no fluor.

Survey @ 3414.8m: 30.40° 138.0Az

ARGILLACEOUS SILTSTONE:it-med gry,grn gry,brnsh blk,ty pyr,tr glauc, tr carb spk,vsft-fm,sbbiky-blky.

SANDSTONE:clr,trnsi,wh,yel,occ dk gry,f-crs,occ crs,sbang-sbrnd, mod srt,tr pyr,tr carb spk & lamn, gd inf por.no fluor.

SANDSTONE:clr,trnsi,wh,yel,occ dk gry,f-crs,occ crs,sbang-sbrnd, mod srt,tr pyr,tr carb spk & lamn, gd inf por.no fluor.

Survey @ 3443.5m: 30.09° 136.9Az

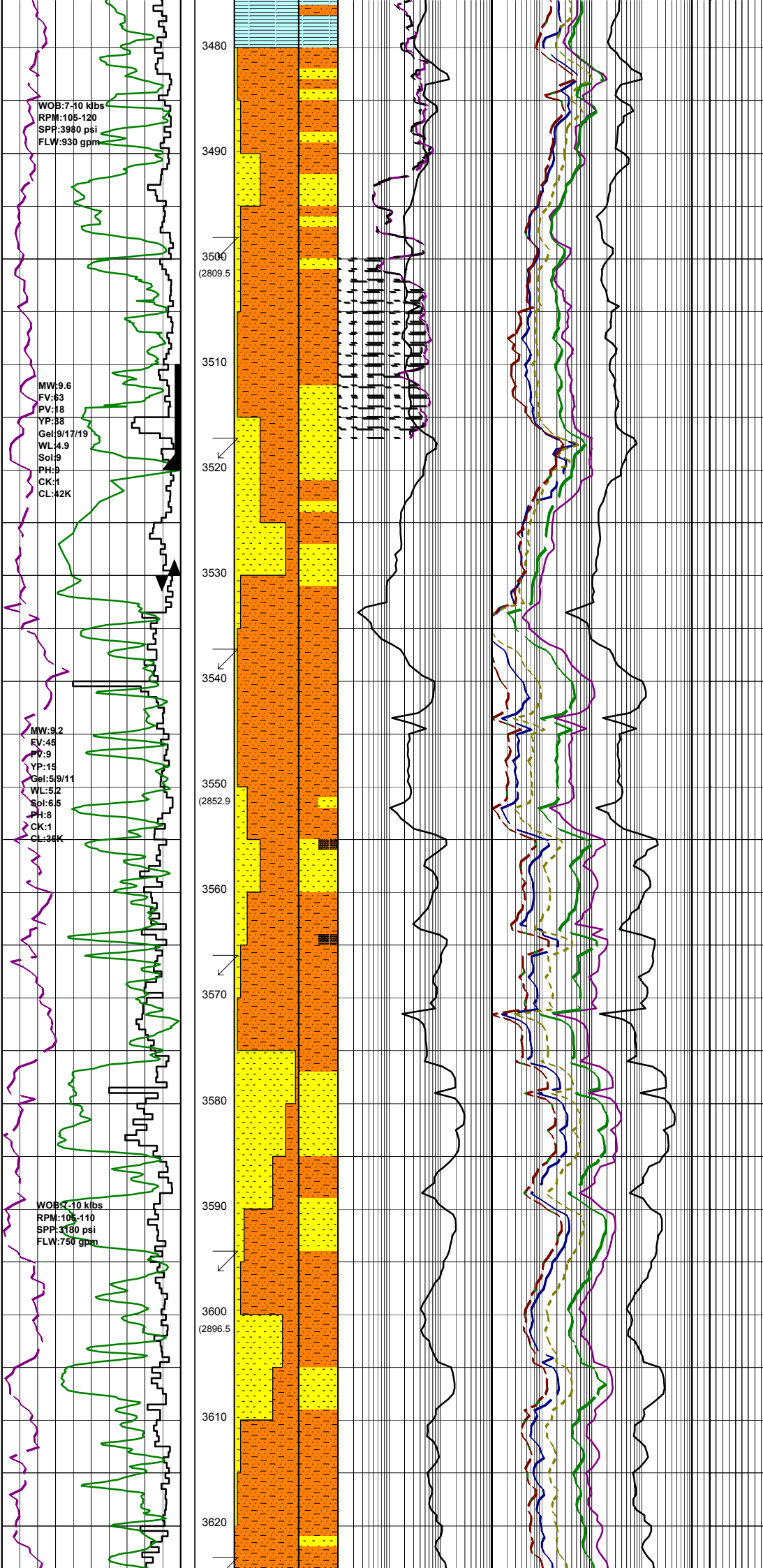
ARGILLACEOUS SILTSTONE:it-med gry,grn gry,brnsh blk,ty pyr,tr glauc, tr carb spk,vsft-fm,sbbiky-blky.

SANDSTONE:clr,trnsi,wh,yel,occ dk gry,f-crs,occ crs,sbang-sbrnd, mod srt,tr pyr,tr carb spk & lamn, gd inf por.no fluor.

SILTY CLAYSTONE:it-med gry,lt olv gry,grn gry,brnsh blk, tr calc,tr glauc, tr pyr,sty l/p,sft-fm, tr carb spk,sbbiky-blky,occ amor.

Survey @ 3471.6m: 29.56° 136.3Az

SILTY CLAYSTONE:it-med gry,



tan, brn-blksh brn, tr micmic, tr C, tr crs sd, tr carb spk, vsft-fri, sbbly-amor.

ARGILLACEOUS SILTSTONE: lt-dk brn, lt-med dk gry, tr micmic, tr pyr, sft-mod fm, sbbly-amor.

SANDSTONE: clr-trnsl, vf-f occ crs, wl srt, sbang-sbrnd, lse, fr inf por, no fluor.

Survey @ 3500.7m: 29.51° 134.7Az

ARGILLACEOUS SILTSTONE: lt gry-med gry, lt brn-blksh brn, tr calc, tr micmic, tr dis pyr, sft-fri, sbbly-amor.

9 5/8" Casing Shoe set @ 3520.0m MDRT (2826.9 mTVD)

Survey @ 3519.0m: 29.52° 134.7Az

COAL: blk, brn blk, dll-ea, brit, tr fm, sbbly, ang-uneven.

SANDSTONE: wh, trnsl-clr, vf-med, occ crs, mod srt, sbang-sbrnd, lse, pr-fr inf por, no fluor.

TD FOR 12.25" HOLE REACHED ON 17/04/06 @ 19:00 HOURS

ARGILLACEOUS SILTSTONE: brnsh gry, brnsh blk, lt gry, tr calc, tr micmic, tr dis pyr, tr carb spk, sft-fri, sbbly-amor, contam cmt w/-20%.

BIT #7: Reed RSX162
SIZE: 216mm 8 1/2"
JETS: 6x15
IN: 3530m OUT: xxxm
RUN: xxxm HRS:
COND:

Survey @ 3538.4m: 30.37° 136.4Az

FIT @ 3533m EMW=13 ppg

SANDSTONE: clr, trnsl, wh, vf-f, rr med, pr srt, sbang-sbrnd, tr arg mt, lse, pr-fr inf por, no fluor.

ARGILLACEOUS SILTSTONE: lt gry-dk gry, lt olv gry, brnsh gry, occ brnsh blk, tr calc, tr pyr, tr carb spk & lamn, tr C, sft-fri, sbbly-blky.

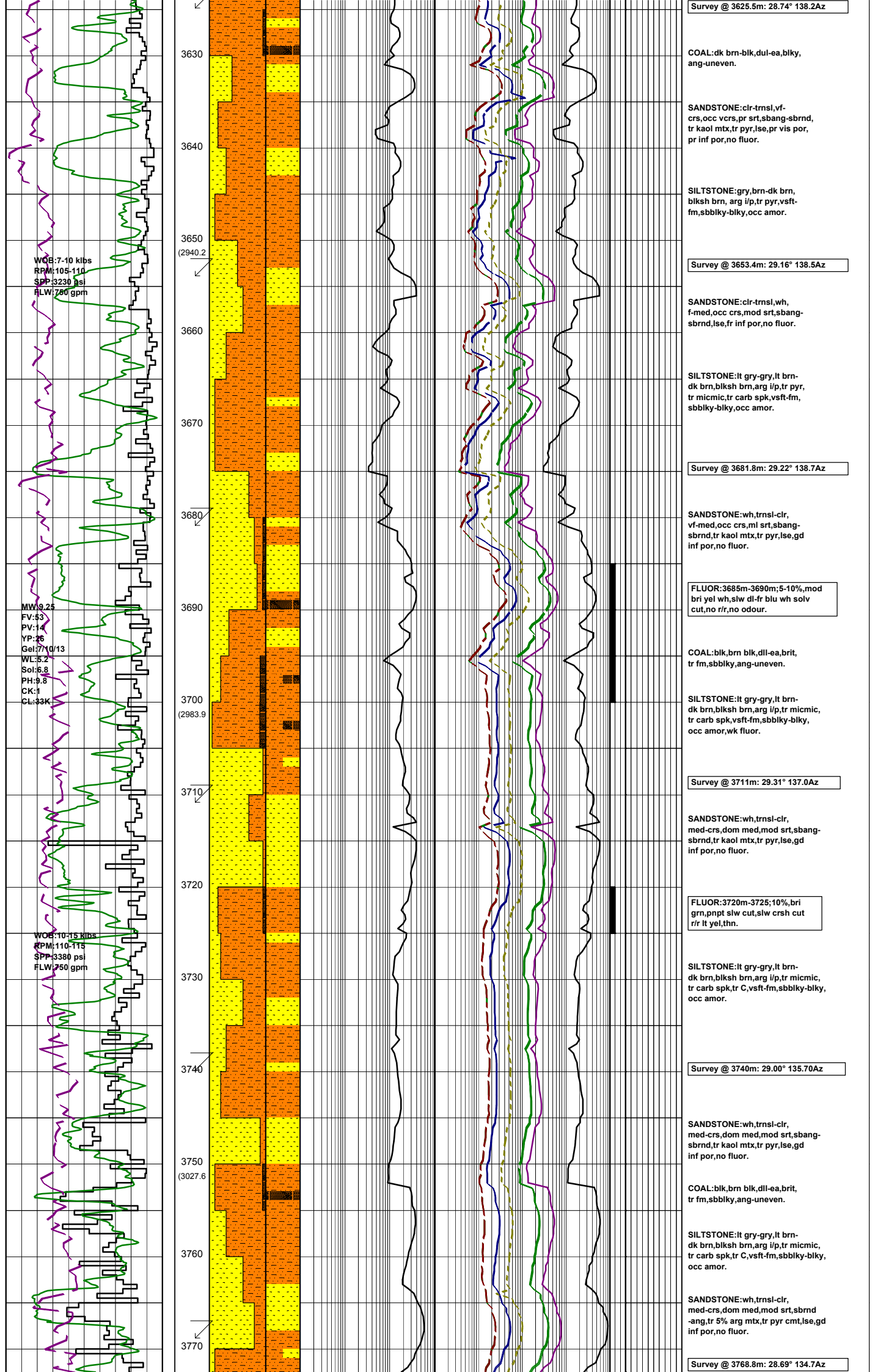
SANDSTONE: clr, trnsl, wh, med-crs, dom crs, mod srt, sbang-sbrnd, tr arg mt, tr pyr, lse, gd inf por, no fluor.

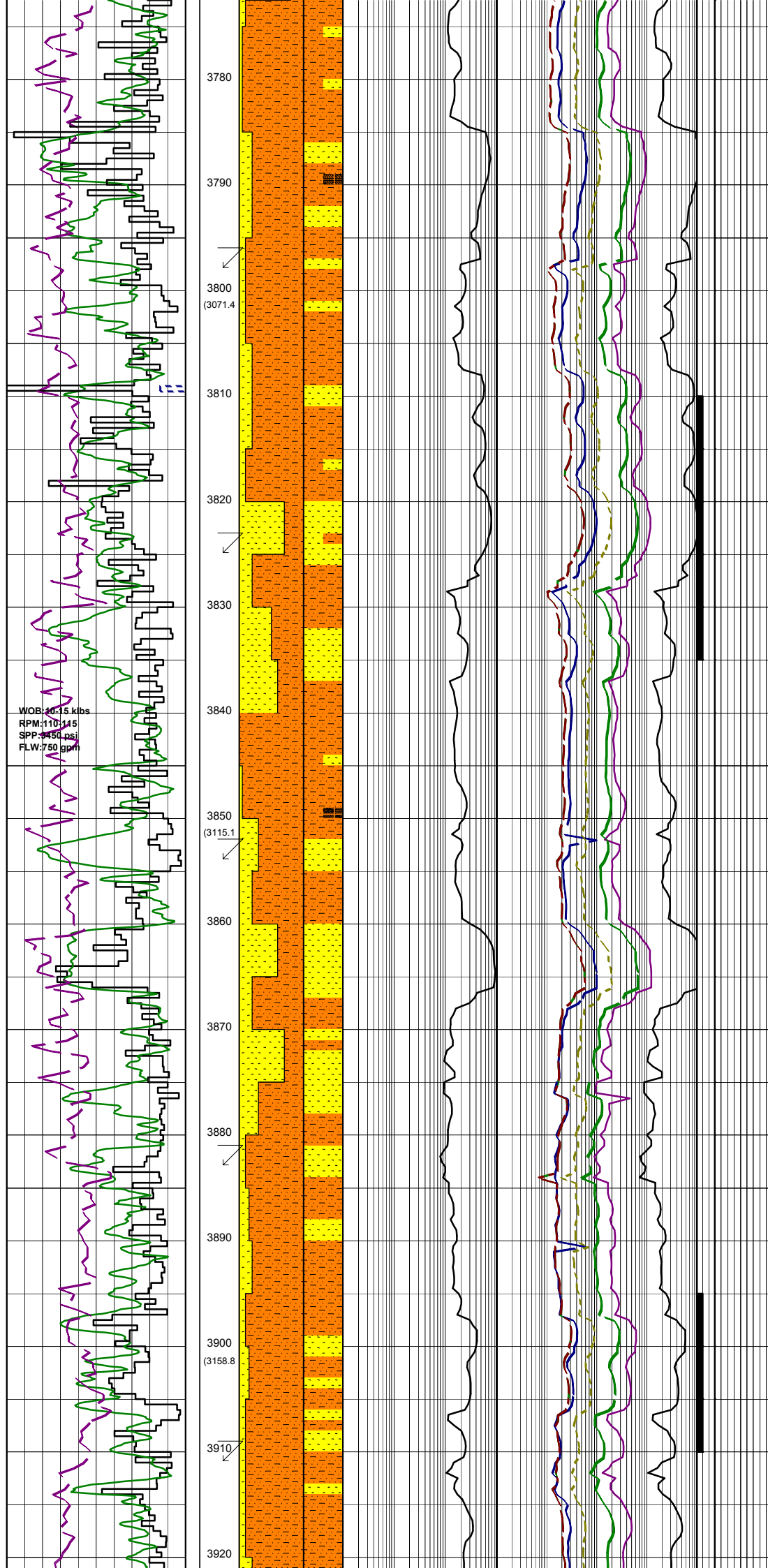
Survey @ 3596.4m: 29.56° 138.4Az

SILTSTONE: med dk-dk gry, brn-blk brn, arg i/p, tr glauc, tr carb spk, sbbly-amor.

SANDSTONE: clr-trnsl, vf-crs, occ vcrs, pr srt, sbang-sbrnd, tr kaol mt, tr pyr, lse, pr vis por, pr inf por, no fluor.

SILTSTONE: lt brn-brn, dk brn-blksh brn, tr pyr, vsft-fm, sbbly-blky.





SILTSTONE: lt gry-gry, lt brn-dk brn, blksh brn, arg i/p, tr pyr, tr carb spk, tr C, vsft-fm, sbbiky-blky, occ amor.

SANDSTONE: wh, trnsi-clr, lt gry, med-crs, dom med, mod srt, sbrnd -ang, tr 5% arg mtx, tr pyr, lse, gd inf por, no fluor.

Survey @ 3797.3m: 29.07° 134.7Az

SILTSTONE: lt gry-gry, lt brn-dk brn, blksh brn, arg i/p, tr pyr, tr carb spk, tr C, vsft-fm, sbbiky-blky, occ amor.

Survey @ 3825.6m: 29.02° 133.0 Az

SANDSTONE: wh, trnsi-clr, lt gry, sft-fri aggr, vf-f, dom f, occ med, pr-mod srt, sbang-rnd, tr 30% wh arg mtx, tr carb grn & lth, pr-fa vis por, fa inf por, occ pyr, no fluor.

FLUOR: 3815m-3835m; tr mod bri grn, pnpt v slw crsh cut, thn yel r/r.

SILTSTONE: lt gry-gry, lt brn-dk brn, blksh brn, arg i/p, tr pyr, tr carb spk, tr C, vsft-fm, sbbiky-blky, occ amor.

Survey @ 3853.6m: 28.92° 133.4 Az

SANDSTONE: wh, trnsi-clr, lt gry, sft-fri aggr, med-crs, occ med, mod-wl srt, sbang-rnd, tr 30% wh arg mtx, tr carb grn & lth, lse, pr-fa vis por, fa inf por, no fluor.

SILTSTONE: lt gry, dk gry, lt brn-dk brn, blksh brn, arg i/p, tr pyr, tr carb spk, tr C, vsft-fm, sbbiky-blky,

Survey @ 3882.5m: 29.05° 132.3 Az

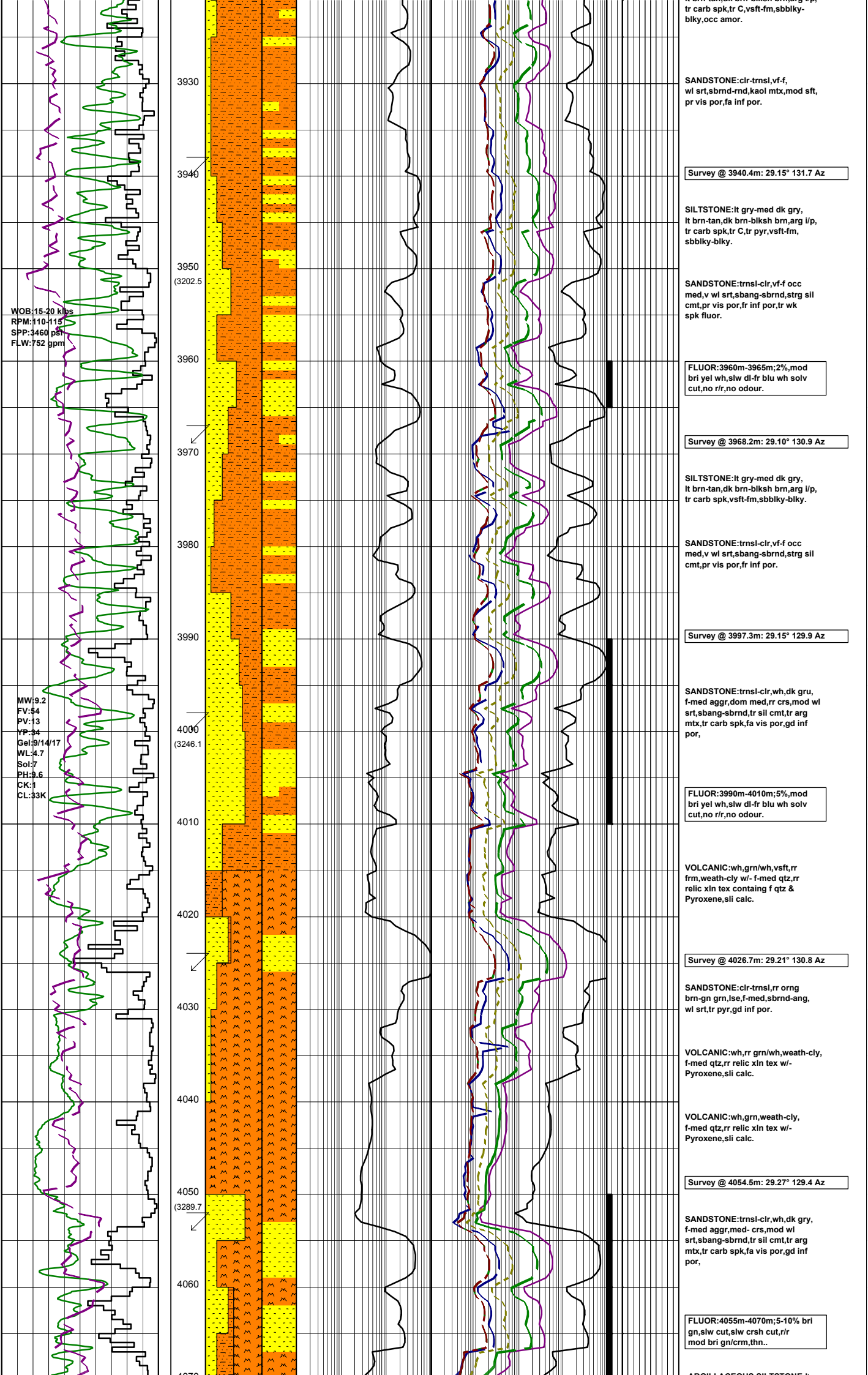
SANDSTONE: clr-trnsi, vf-f, v wl srt, sbrnd-rnd, tr kaol mtx, lse, gd inf por.

FLUOR: 3895m-3910m; 2-5%, mod bri yel wh, slw dl-fr blu wh solv cut, no r/r, no odour.

Survey @ 3911.8m: 28.92° 132.4 Az

SILTSTONE: lt gry-gry, lt brn-dk brn, blksh brn, arg i/p, tr carb spk, tr C, tr pyr, vsft-sft, occ frm, sbbiky-amor.

SILTSTONE: lt gry-med dk gry, lt brn-tan, dk brn-blksh brn, arg i/p,



tr carb spk, tr C, vsft-fm, sbbkly-bkly, occ amor.

SANDSTONE: clr-trmsl, vf-f, wl srt, sbrnd-rnd, kaol mt, mod sft, pr vis por, fa inf por.

Survey @ 3940.4m: 29.15° 131.7 Az

SILTSTONE: lt gry-med dk gry, lt brn-tan, dk brn-blksh brn, arg i/p, tr carb spk, tr C, tr pyr, vsft-fm, sbbkly-bkly.

SANDSTONE: trnsi-clr, vf-f occ med, v wl srt, sbang-sbrnd, strg sil cmt, pr vis por, fr inf por, tr wk spk fluor.

FLUOR: 3960m-3965m; 2%, mod bri yel wh, slw dl-fr blu wh solv cut, no r/r, no odour.

Survey @ 3968.2m: 29.10° 130.9 Az

SILTSTONE: lt gry-med dk gry, lt brn-tan, dk brn-blksh brn, arg i/p, tr carb spk, vsft-fm, sbbkly-bkly.

SANDSTONE: trnsi-clr, vf-f occ med, v wl srt, sbang-sbrnd, strg sil cmt, pr vis por, fr inf por.

Survey @ 3997.3m: 29.15° 129.9 Az

SANDSTONE: trnsi-clr, wh, dk gru, f-med aggr, dom med, rr crs, mod wl srt, sbang-sbrnd, tr sil cmt, tr arg mt, tr carb spk, fa vis por, gd inf por.

FLUOR: 3990m-4010m; 5%, mod bri yel wh, slw dl-fr blu wh solv cut, no r/r, no odour.

VOLCANIC: wh, grn/wh, vsft, rr frm, weath-cly w/ f-med qtz, rr relic xin tex containg f qtz & Pyroxene, sli calc.

Survey @ 4026.7m: 29.21° 130.8 Az

SANDSTONE: clr-trmsl, rr orng brn-gn, lse, f-med, sbrnd-ang, wl srt, tr pyr, gd inf por.

VOLCANIC: wh, rr grn/wh, weath-cly, f-med qtz, rr relic xin tex w/ Pyroxene, sli calc.

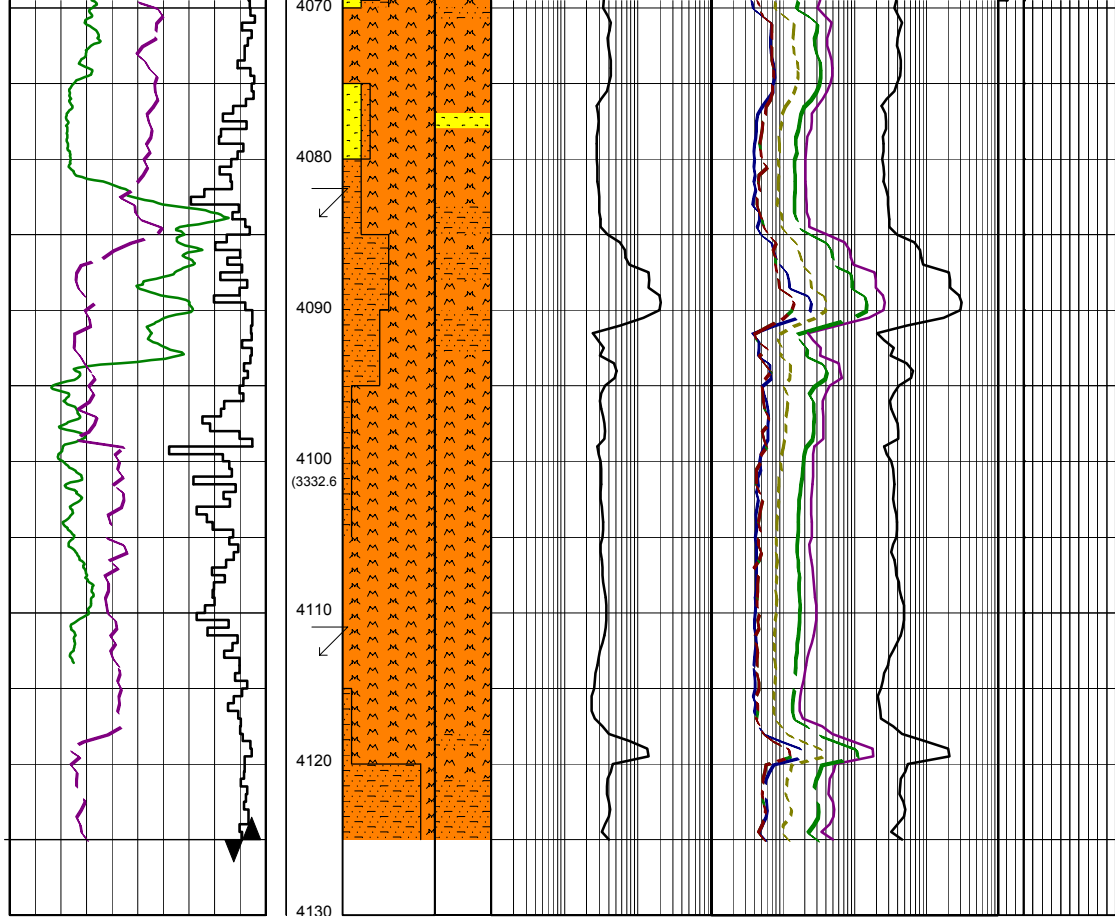
VOLCANIC: wh, grn, weath-cly, f-med qtz, rr relic xin tex w/ Pyroxene, sli calc.

Survey @ 4054.5m: 29.27° 129.4 Az

SANDSTONE: trnsi-clr, wh, dk gry, f-med aggr, med- crs, mod wl srt, sbang-sbrnd, tr sil cmt, tr arg mt, tr carb spk, fa vis por, gd inf por.

FLUOR: 4055m-4070m; 5-10% bri gn, slw cut, slw crsh cut, r/r mod bri gn/crm, thn..

ARCHAEOZOIC SILTSTONE



ARGILLACEOUS SILTSTONE:lt
gry,brn-dk brn,tr pyr,tr carb spk,
tr calc,sft-fm,sbbiky-blky.

Survey @ 4083.3m: 30.80° 130.0 Az

CARBONACEOUS SILTSTONE:lt
brn-dk brn,tr pyr,tr carb spk,
mod calc,g/t carb clyst i/p,vsft-
mod,sbbiky-blky.

VOLCANIC:wh,grn,lt blu,dk blu-
blush gry,weath-cly,f-med qtz,rr
relic xln tex w/- Pyroxene,sli
calc.

VOLCANIC:wh,lt blu,lt gry,
occ pnk,weath-cly,sli calc.

Survey @ 4112.6m: 30.30° 130.7 Az

CARBONACEOUS SILTSTONE:lt
brn-brn,brnsh gry,mod carb spk,g/t
carb clyst i/p,vsft-sft,sbiky-
amor.

REACHED TD 4125m MDRT
3353.5m TVDRT AT 14:40 hrs
27th April '06